

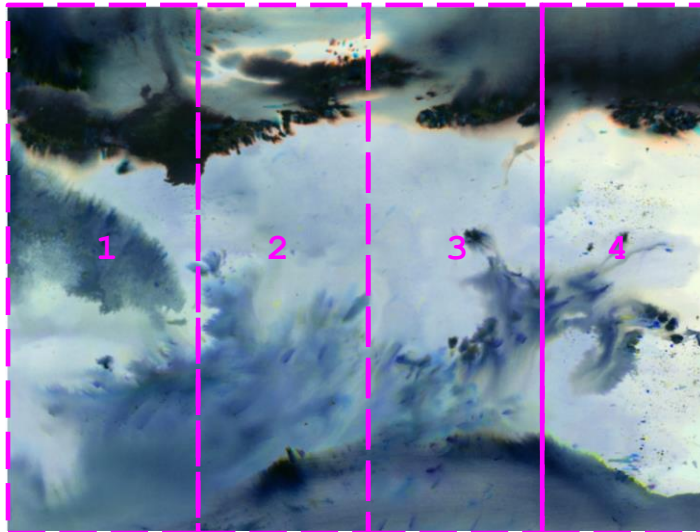
# TECHNICAL SPECIFICATION

## CUSTHOM wallcoverings / window graphics / acoustic

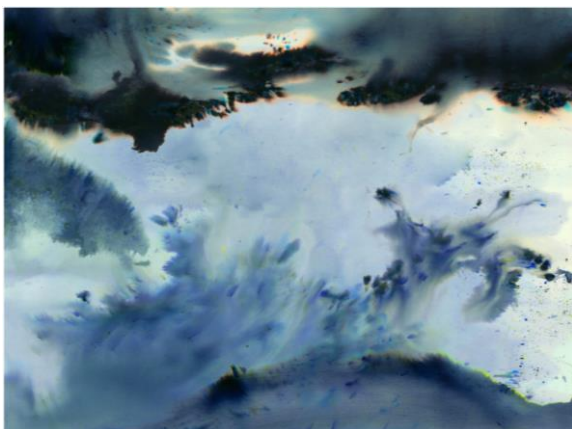
---

### DIGITALLY PRINTED wallcoverings

|                    |   |
|--------------------|---|
| <b>Product</b>     | CUSTHOM digitally printed wallcovering  |
| <b>Description</b> | Digifort commercial quality vinyl wallcovering laminated onto woven/non woven fabric backing. These designs can also be printed on other Tektura wallcoverings.   |
| <b>Weight</b>      | From 350 grammes per square metre.  |
| <b>Roll Size</b>   | CUSTHOM digitally printed wallcoverings are made to order, to fit customer's own wall dimensions. They can also be scaled up and down (see below for max size), stretched, cropped and selected designs can be repeated to fit larger areas (see below). The wallcovering is supplied in pre-cut drops. The number, width and height of each drop are determined by the final wall dimensions. Drops are supplied with extra selvedge for overlapping and trimming. |



Example Cloudburst



#### **Cloudburst**

Image shown represents the full design.  
Maximum recommended print size 300cm tall x 400cm wide

The design can be resized and cropped to fit.

Refer to website for all standard colours.  
Colours can be adjusted.



### **Nebula**

Image shown represents the full design.  
Maximum recommended print size 300cm tall x 400cm wide

The design can be resized and cropped to fit.

Refer to website for all standard colours.  
Colours can be adjusted.



### **Brush Grid**

Image shown represents the full design.  
Maximum recommended print size 300cm tall x 400cm wide

The design can be resized and cropped to fit.

Refer to website for all standard colours.  
Single block colours can be changed to suit.  
Two-tone colours can be adjusted.



### **Offset**

Image shown represents the full design.  
Maximum recommended print size 300cm tall x 500cm wide

The design can be resized and cropped to fit.

Refer to website for all standard colours.  
Design can be recoloured as required.

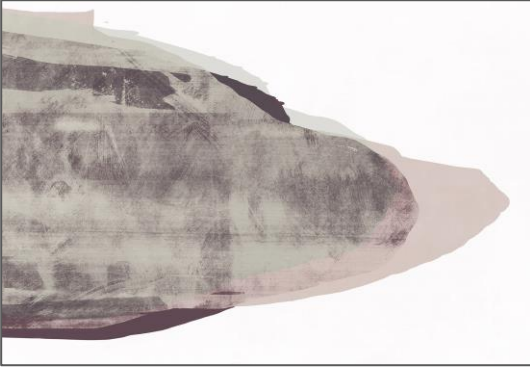


### **Rye**

Image shown represents a single repeat 300cm tall x 100cm wide.

The maximum recommended repeat size is 300cm tall x 100cm wide. The design can be resized, cropped and repeated to fit any wall size.

Design can be recoloured as required.



### **Sand**

Image shown represents the full design. Maximum recommended print size 300cm tall x 347cm wide.

The design can be resized and cropped to fit.

Refer to website for all standard colours. Standard colours can be adjusted.

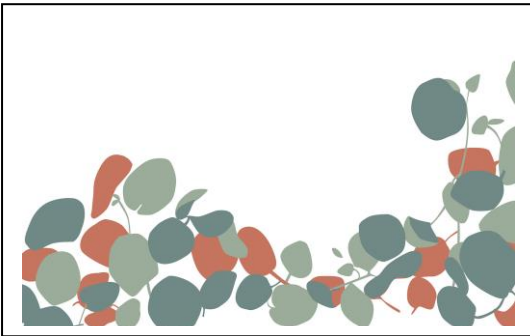


### **Stems**

Image shown represents a the full design – single repeat. Maximum recommended print size per repeat 300cm tall x 437cm wide.

Can be resized, and cropped to fit. Can be repeated widthways to fill any length wall.

Refer to website for all standard colours, which can be adjusted. Design can be recoloured.



### **Succulent**

Image shown represents the full design. Maximum recommended print size 300cm tall x 500cm wide

The design can be resized and cropped to fit.

Refer to website for all standard colours. Design can be recoloured as required.



### **Geffrye**

Image shown represents a single repeat 67cm tall x 52cm wide.

This design incorporates fine detail. We therefore don't recommend enlarging the design as print clarity will be diminished.

The design can be repeated to fit any wall size.

Design can be recoloured as required.



## Igneous

Image shown represents an area  
72cm tall x 54cm wide

A full single repeat is 209cm tall x 75cm wide with  
individual 'blocks' measuring 18cm x 18cm.

Maximum recommended print size is blocks measuring  
36cm x 36cm

The design can be resized, cropped and repeated to fit  
any wall size.

Design can be recoloured as required.

|                            |  |
|----------------------------|--|
| <b>Maximum sizes</b>       | Refer to images above to see max recommended print size. Selected designs can be repeated to fill bigger wall areas.   |
| <b>Colour</b>              | Custom digitally printed designs are available in colours shown. Check the website to see other colour options. Cloudburst, Nebula, Offset and Sand can have colours adjusted. Other designs: These can be recoloured. The background also can be coloured, or left 'blank' to reveal the underlying wallcovering. For window film, the background can be left 'transparent'. Alterations to original colours may be subject to artwork charges.   |
| <b>Fire Rating</b>         | Euro classification B when adhered to suitable substrate.<br>(UK) Class 0 and 1 to BS476 part 6 and 7 when adhered to a suitable substrate.<br>Marine fire rated (on request)  |
| <b>Adhesive</b>            | Generally Tekfix Plus, though depends on substrate.  |
| <b>Hanging</b>             | <p>Digital wallcovering is printed to order, and each order is unique. The pattern match points, self-edge allowance and sequence in which drops should be installed are given in hanging instructions supplied with order. Exact pattern matching is vital. The product should not be reverse hung.</p> <p>Apply adhesive to wall surface. Carefully smooth wallcovering onto wall surface using a felt roller or felt-covered spatula. Note that allowance will have been made for trimming top and bottom to compensate for uneven walls. Overlap lengths and visually match image. (In many cases crop marks are also included at the top/bottom of each drop as an additional guide to pattern matching). Adjust position if necessary to achieve optimum pattern match. Double cut through using a sharp blade, cutting perpendicular to wall surface to ensure a clean join. Use a seam roller to ensure product is well bonded at the join. Remove any adhesive seepage immediately with warm water.</p> |
| <b>Maintenance</b>         | <p>Digital vinyls with fabric backing are wipeable and washable, and offer some resistance to knocks. With regular cleaning they will retain their original appearance for many years depending on area of use.</p> <p>Always carry out a trial in an inconspicuous area first, to ensure cleaning agent suitable. Avoid polishes, abrasive cleaners, solvent or bleach-based cleaners as these will damage the print and vinyl. Slight or moderate soiling can be removed using a combination of mild non-soapy detergent and a soft damp cloth/sponge. Dabbing – certainly not rubbing – is recommended to lift the soil.</p> <p>It is important to rinse off with clean water and (absorbent) cloth, always cleaning from the skirting level upwards. Individual stains should be removed as quickly as possible. This wallcovering contains antimicrobials which guard against mildew and bacterial growth</p>   |
| <b>Health &amp; Safety</b> | This product is classified as non-hazardous and therefore does not require any special handling. This product does not require special labelling.  |
| <b>Handling/Storage</b>    | Store at ambient temperatures away from heat source. Suitable lifting equipment may be required.   |
| <b>Fire Fighting</b>       | Any extinguishing media are suitable. Wear self contained breathing apparatus, protective  |

clothing and full face mask. Fumes should be ventilated immediately due to possible liberation of noxious gases.

**Ecological** This product is not bio-degradable. Dispose of in accordance with Local Authority regulations or via an authorised contractor.

---

## DIGITALLY PRINTED window film

---

|                            |  |
|----------------------------|--|
| <b>Description</b>         | 70 micron polymeric film, frosted or clear.  |
| <b>Weight</b>              | 22 grammes per square metre  |
| <b>Size</b>                | Varies, depending on project   |
| <b>Fire Rating</b>         | Euroclass B when adhered to suitable substrate   |
| <b>Adhesive</b>            | Product is self adhesive - permanent pressure sensitive acrylic with Kraft release liner   |
| <b>Installation</b>        | Apply the film using a wet application method to saturate the glass, using either proprietary application fluid or a solution of water with a drop of washing up liquid added. Align the film at the top edge using the 'hinge' method. Squeegee the film by applying overlapping strokes from the top centre outwards in each direction and then repeat down the film. A felt squeegee is recommended to avoid scratching. Avoid creasing the film. Once applied the film can be trimmed with a sharp blade. Be aware that water around the edge of the panel will cause dirt ingress, so avoid excess fluid towards the edges of the film. |
| <b>Maintenance</b>         | The film is wipeable and washable. With occasional cleaning it will retain its original appearance for many years depending on area of use. Always carry out a trial in an inconspicuous area first, to ensure cleaning agent suitable. Clean with a mild non-soapy detergent with a soft cloth or sponge. Excess water can be carefully removed with a soft rubber squeegee. Be aware that any grit or rough edges on the squeegee may cause scratching.  |
| <b>Health &amp; Safety</b> | This product is classified as non-hazardous and therefore does not require any special handling. This product does not require special labelling.  |
| <b>Handling/Storage</b>    | Store at ambient temperatures away from heat source. Suitable lifting equipment may be required.   |
| <b>Fire Fighting</b>       | Any extinguishing media are suitable. Wear self contained breathing apparatus, protective clothing and full face mask. Fumes should be ventilated immediately due to possible liberation of noxious gases.   |
| <b>Ecological</b>          | This product is not bio-degradable. Dispose of in accordance with Local Authority regulations or via an authorised contractor.   |

---

## DIGITALLY PRINTED Zintra acoustic panels

---

|                     |   |
|---------------------|---|
| <b>Description</b>  | 12mm thick Zintra acoustic panels, 100% polyester printed with UV cured ink.  |
| <b>Weight</b>       | 2.4kg per square metre.   |
| <b>Panel size</b>   | Maximum single panel 2790mm x 1215mm  |
| <b>Fire Rating</b>  | Euro classification B when adhered to suitable substrate  |
| <b>Installation</b> | Adhere to substrate with Silicon based construction adhesive. Alternatively attach with screws, Z-clips, nails, stand-offs, aluminium trims or millwork |
| <b>Maintenance</b>  | Zintra acoustic panels can be vacuumed.   |

|                            |   |
|----------------------------|---|
| <b>Health &amp; Safety</b> | No classifiable hazardous ingredients.  |
| <b>Handling/Storage</b>    | Large panels can be heavy and unwieldy. Handle with care. Store flat.   |
| <b>Fire Fighting</b>       | Any extinguishing media are suitable. Wear self contained breathing apparatus, protective clothing and full face mask. Fumes should be ventilated immediately due to possible liberation of noxious gases |
| <b>Ecological</b>          | This product is not bio-degradable. Dispose of in accordance with Local Authority regulations or via an authorised contractor.  |

---

TEKTURA

Tektura Ltd, 34 Harbour Exchange Square, London E14 9GE Tel 020 7536 3300 info@tektura.com